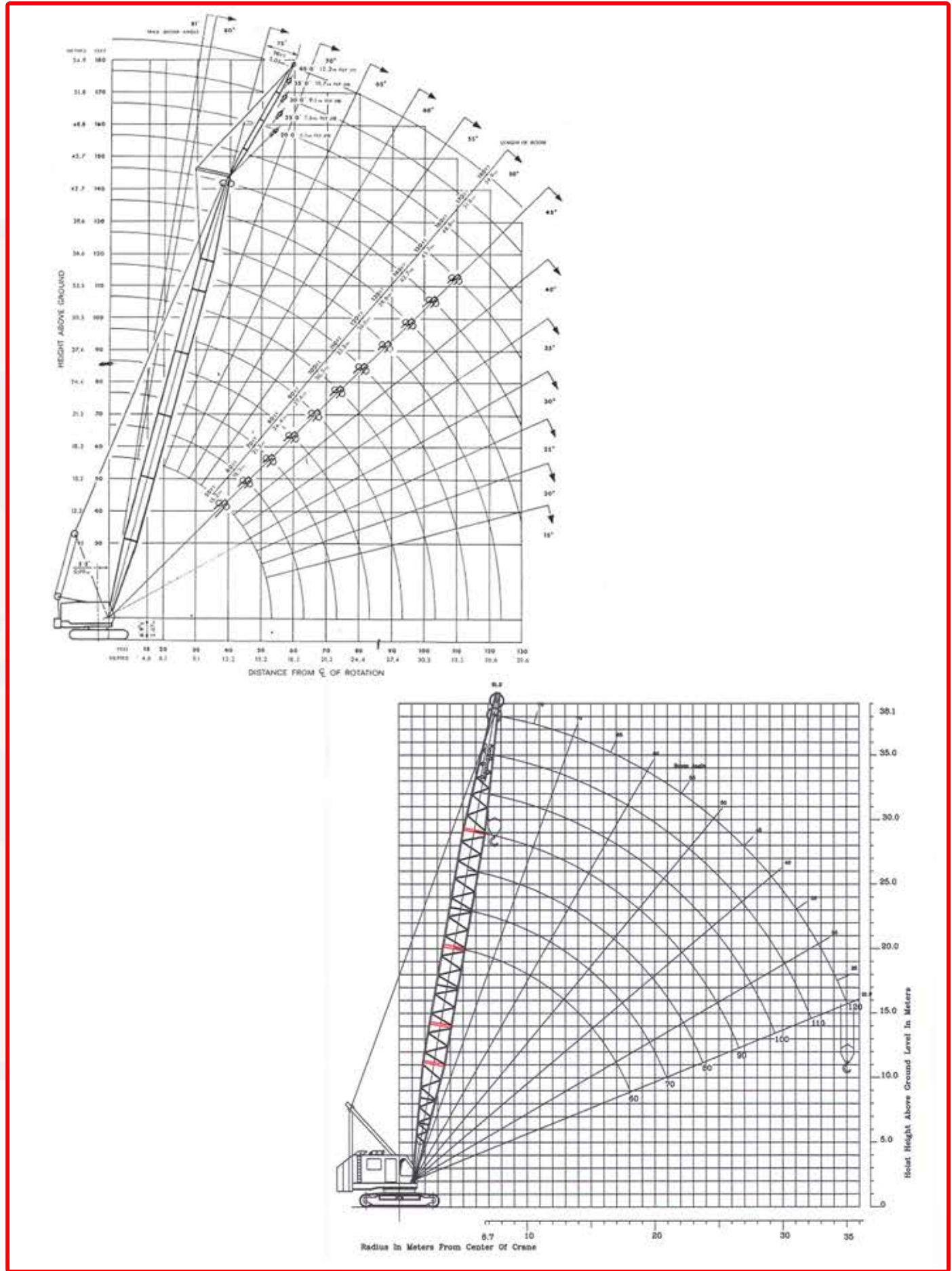




## LSI CRANE LIST

- NCK 406**  
30 TON CRAWLER CRANE - 80 ft BOOM (PRESSURIZED)
- SUMITOMO LS-138RH**  
65 TON CRAWLER CRANE - 80 ft BOOM (PRESSURIZED / HYDRAULIC)
- MANITOWOC 3900**  
90 TON CRAWLER CRANE - 130 ft BOOM (MECHANICAL SWING)
- MANITOWOC 3900 S2**  
(FIXED CRANE / WITHOUT TRUCK OR TRACKS)
- 130 TON CRAWLER CRANE - 120 ft BOOM (MECHANICAL SWING)
- MANITOWOC 4000**  
160 TON CRAWLER CRANE - 170 ft BOOM (MECHANICAL SWING)
- MANITOWOC 4100 S2**  
205 TON CRAWLER CRANE - 180 ft BOOM, 40 ft FLY JIB  
(PRESSURIZED / HYDRAULIC)
- AMERICAN HOIST CRANE AH9320**  
250 TON CRAWLER CRANE - 180 ft BOOM  
(PRESSURIZED / HYDRAULIC)



NOTE:  
ALL DETAILS ARE GIVEN IN GOOD FAITH BUT WITHOUT GUARANTEE